

Scottsdale Airpark Corporate Office Space

# FOR SUBLEASE

SUBLEASE ENDS APRIL 30, 2020

**\$19.50/sf/yr Full Service**

**±2,404 SQ. FT.**



**15150 N Hayden Road | Suite 104 | Scottsdale, Arizona 85260**

- Reception area
- Large open office + one (1) office
- Storage room, Break room
- Ideal Scottsdale Airpark Location
- Minutes from Loop 101

PROPERTY OWNED AND  
MANAGED BY:



- Stable and flexible property owner in Phoenix/Tucson metro, since 1992, with office and industrial properties totaling over 10.3 million square feet.
- Local Ownership with in-house property management professionals to service our customers.
- Move-in ready suites available for immediate delivery.
- Efficient lease negotiation process.

For further property information or to schedule a tour please contact:



**John Quatrini**  
Associate Broker  
C 602.859.0506  
O 480.443.3992

john@shellcommercial.com



**Suzanne Enright**  
Senior Associate  
C 602.471.2981  
O 480.443.3992

suzanne@shellcommercial.com



**SHELL**  
*Commercial Investment Real Estate*

**480 443 3992**  
**shellcommercial.com**

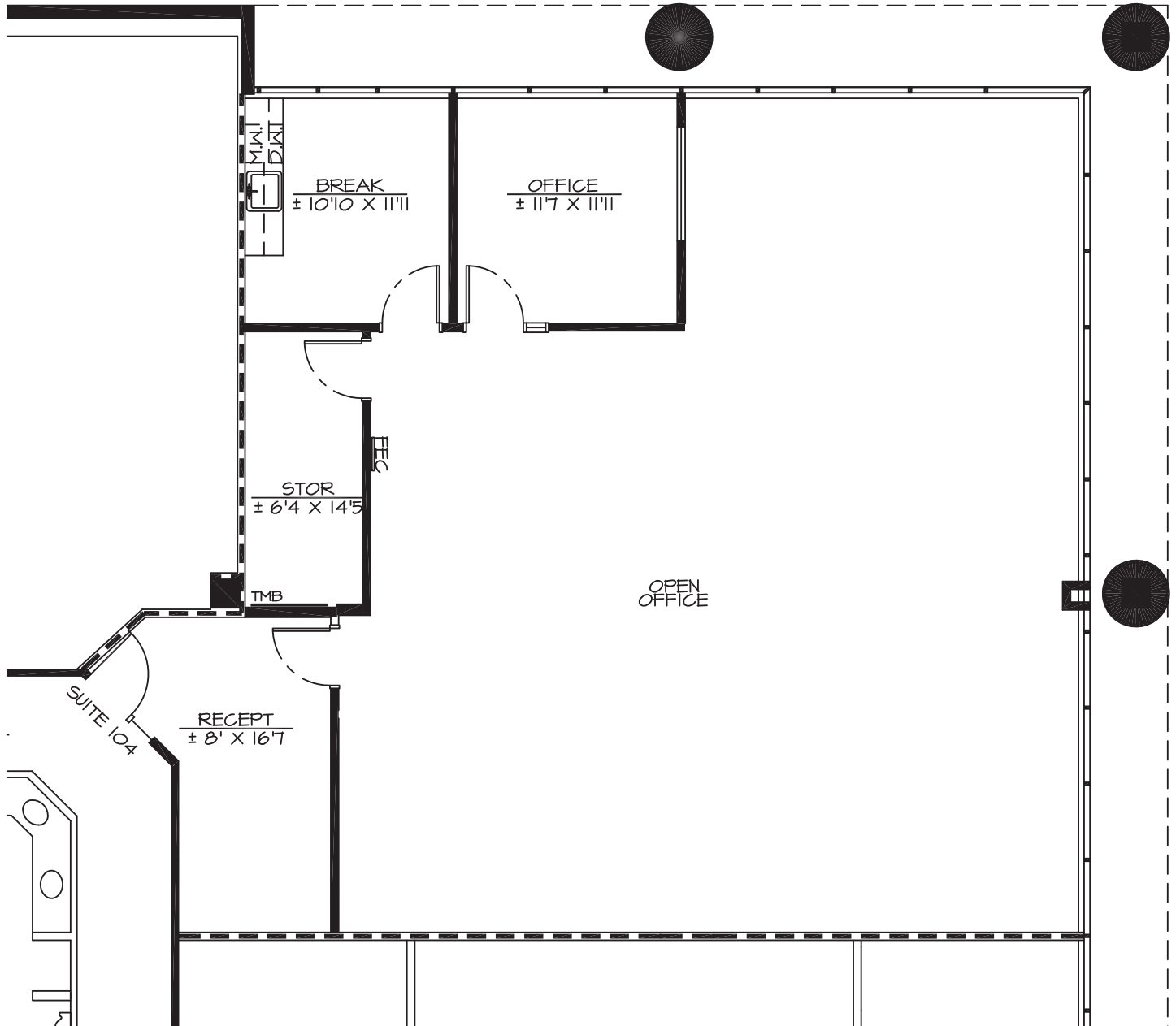
**480.443.3992 shellcommercial.com**



**16410 N 91st Street | Suite 112 | Scottsdale, Arizona 85260**

The above is subject to prior sales and leasing. This information has been secured from sources we believe to be reliable, but we make no representation or warranties, expressed or implied as to the accuracy of this information.

15150 N Hayden Road | Suite 104 | Scottsdale, Arizona 85260



## FLOOR PLAN

1/8"



### NOT TO SCALE

All information furnished regarding property for sale, rental or financing is from sources deemed reliable, but no warranty or representation is made to the accuracy thereof and same is submitted to errors, omissions, change of price, rental or other conditions, prior to sale, lease or financing or withdrawal without notice. No liability of any kind is to be imposed on the broker herein. This information has been secured from sources deemed reliable, however, we make no warranties as to its accuracy.

